

# CHIMACUM RIDGE COMMUNITY FOREST



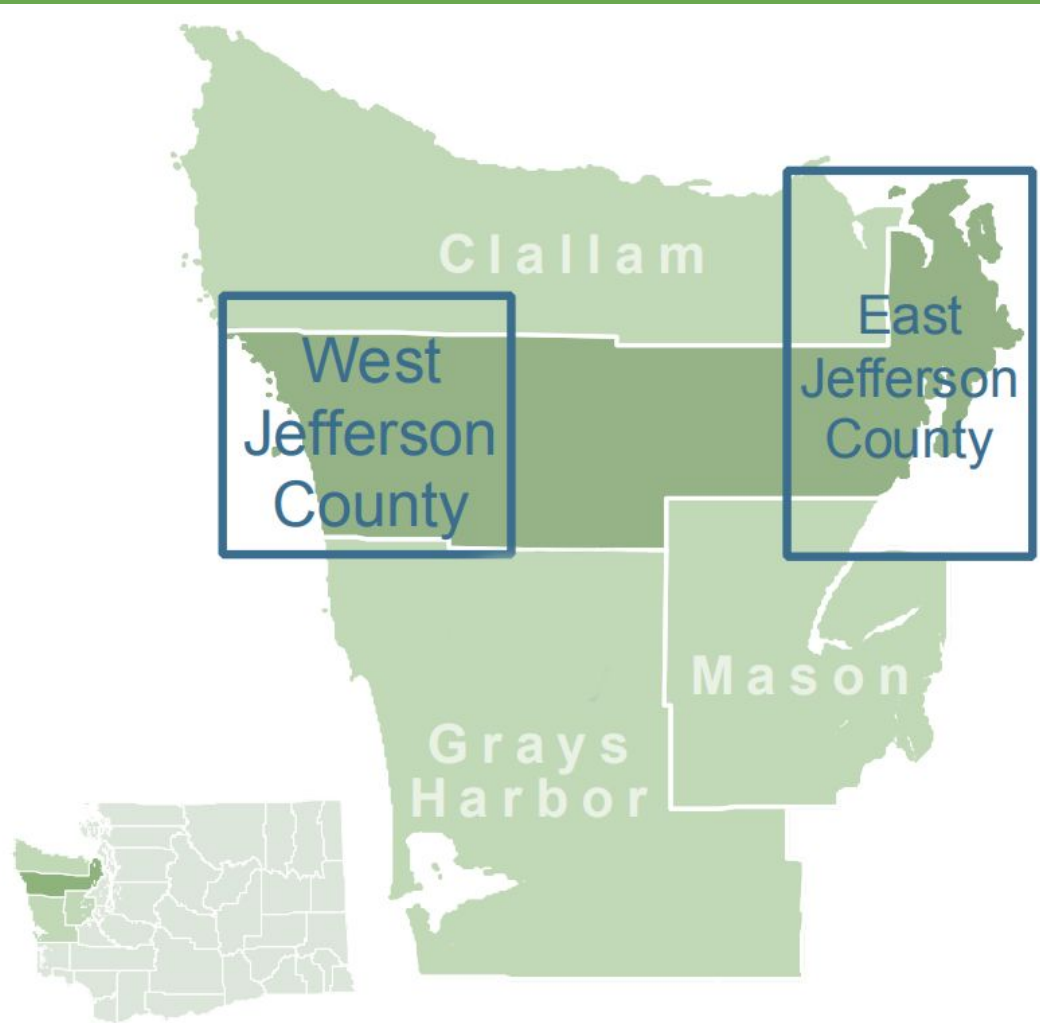
Photographer: Kerry Tremain, LEO





*At Jefferson Land Trust  
we are working with the  
community to preserve  
open space, working  
lands and habitat  
forever.*

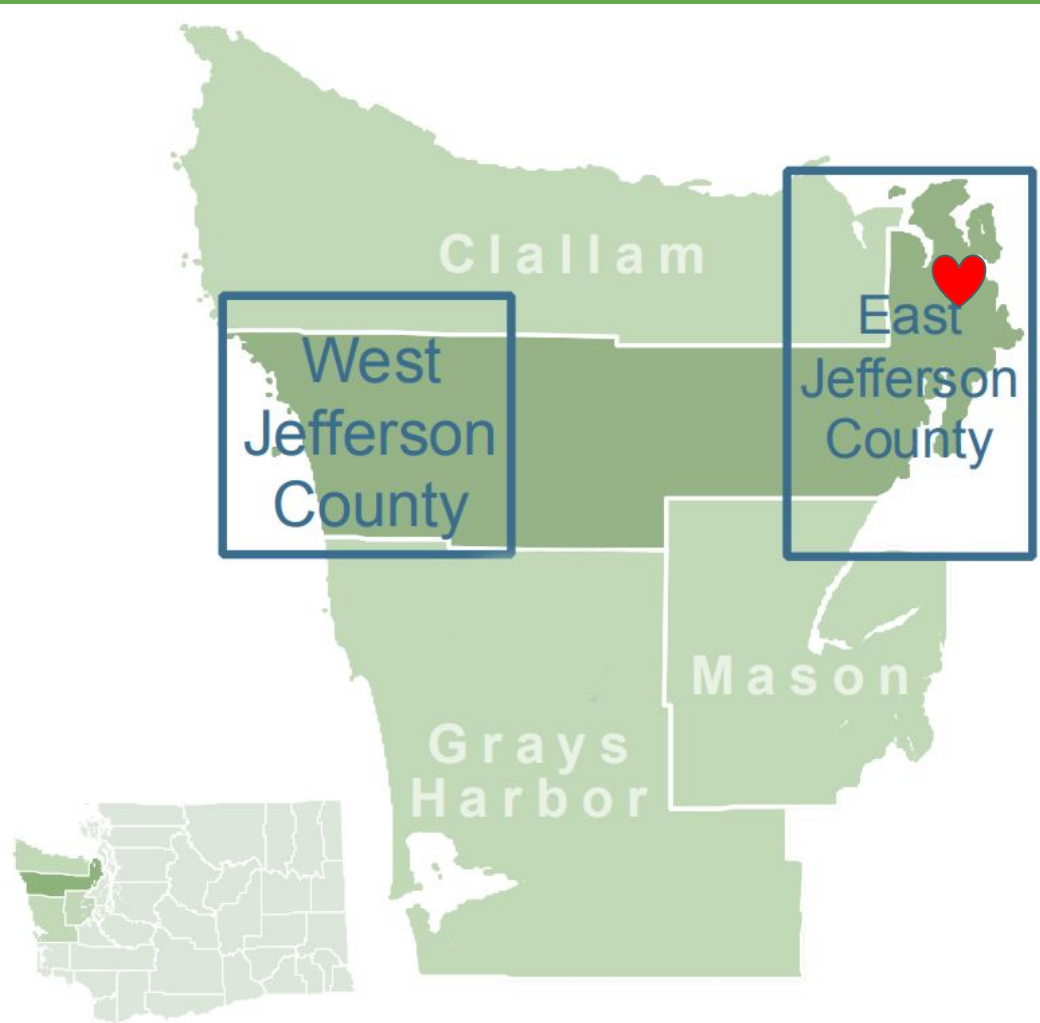
**[www.saveland.org](http://www.saveland.org)**





*At Jefferson Land Trust  
we are working with the  
community to preserve  
open space, working  
lands and habitat  
forever.*

***[www.saveland.org](http://www.saveland.org)***







**Chimacum Ridge**

Washington

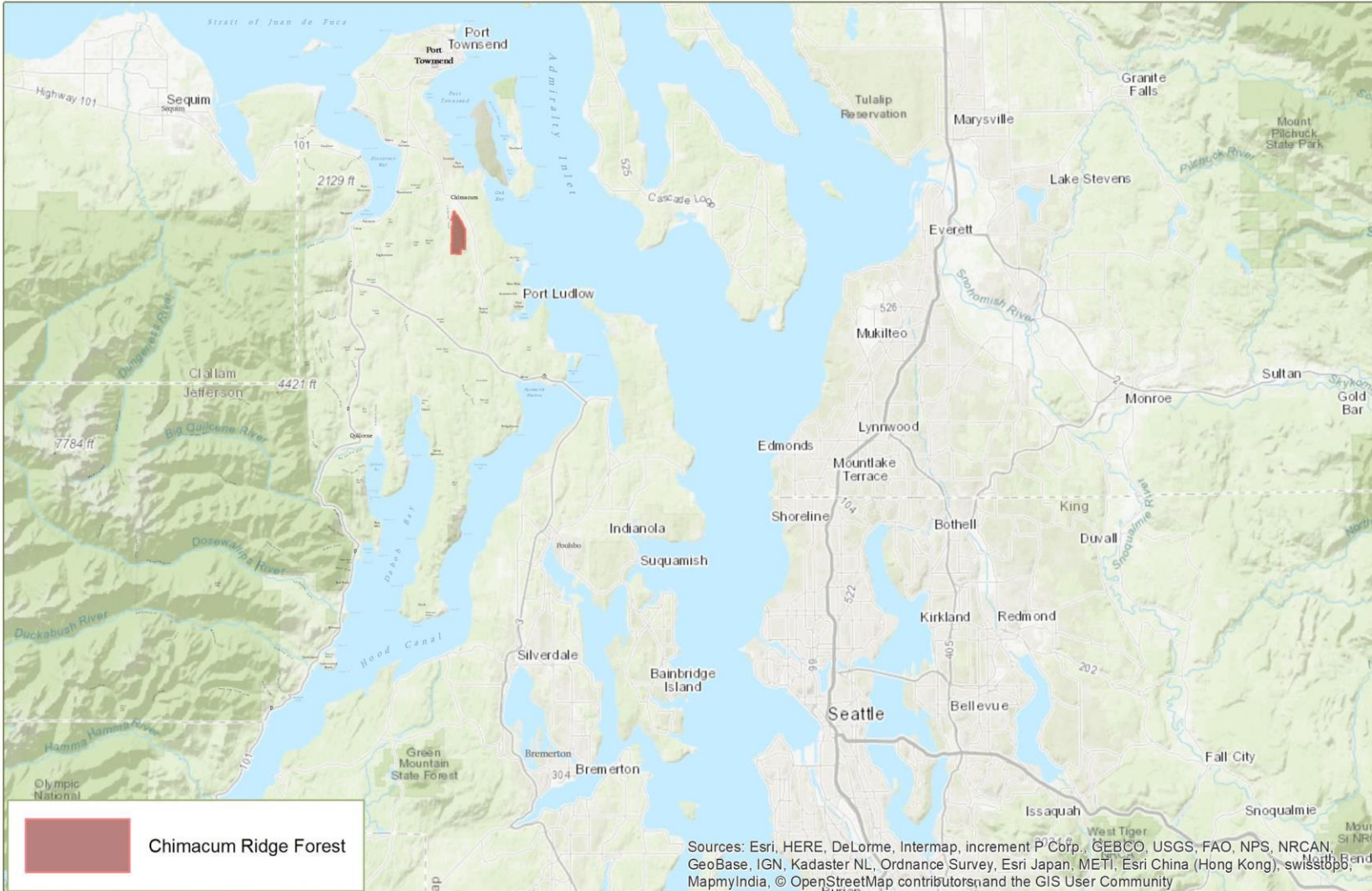
Montana

Oregon

Idaho

Wyoming

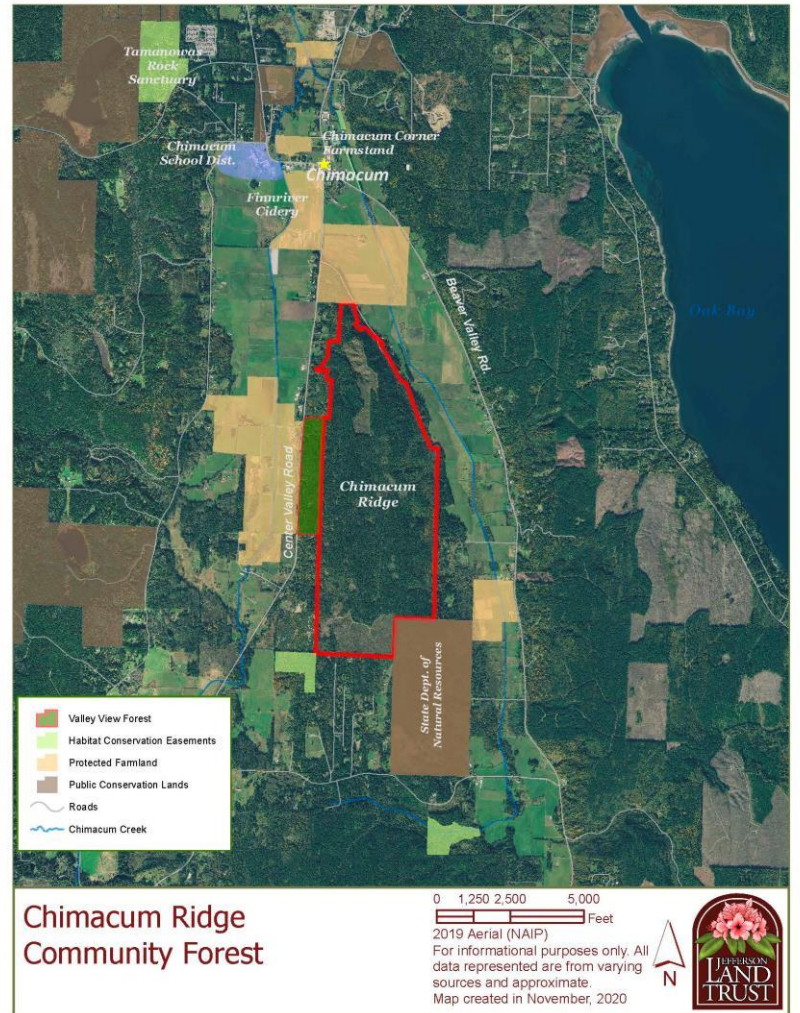




Chimacum Ridge Forest

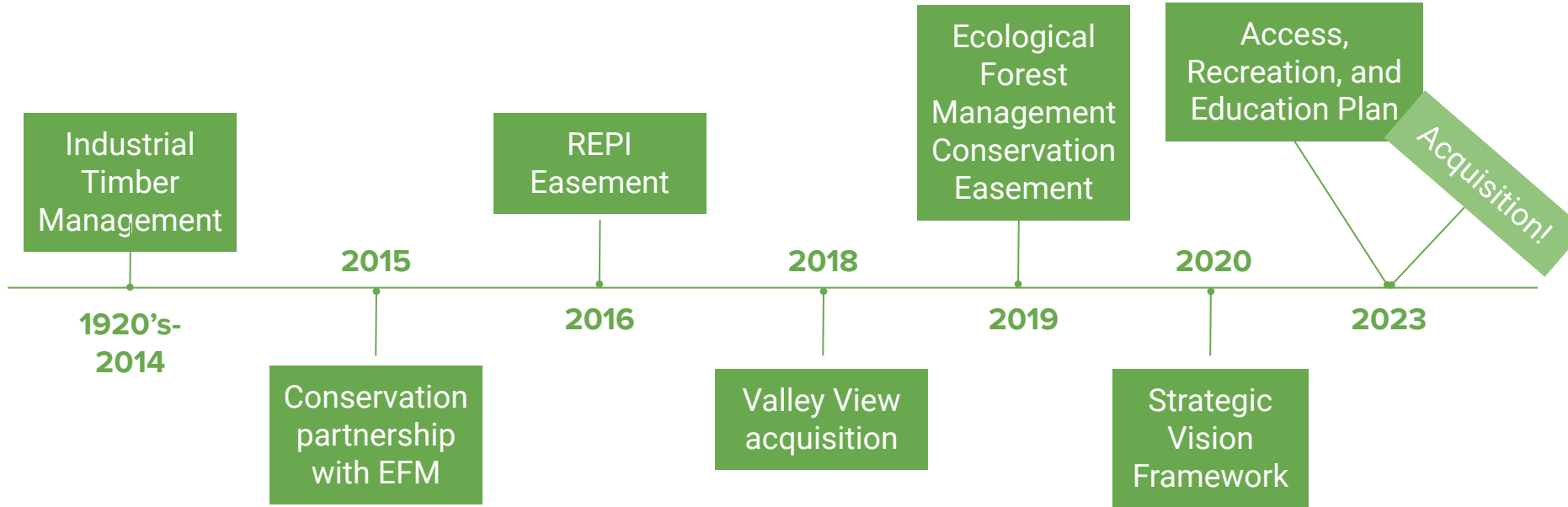
Sources: Esri, HERE, DeLorme, Intermap, increment P Corp., GEBCO, USGS, FAO, NPS, NRCAN, GeoBase, IGN, Kadaster NL, Ordnance Survey, Esri Japan, METI, Esri China (Hong Kong), swisstopo, MapmyIndia, © OpenStreetMap contributors, and the GIS User Community







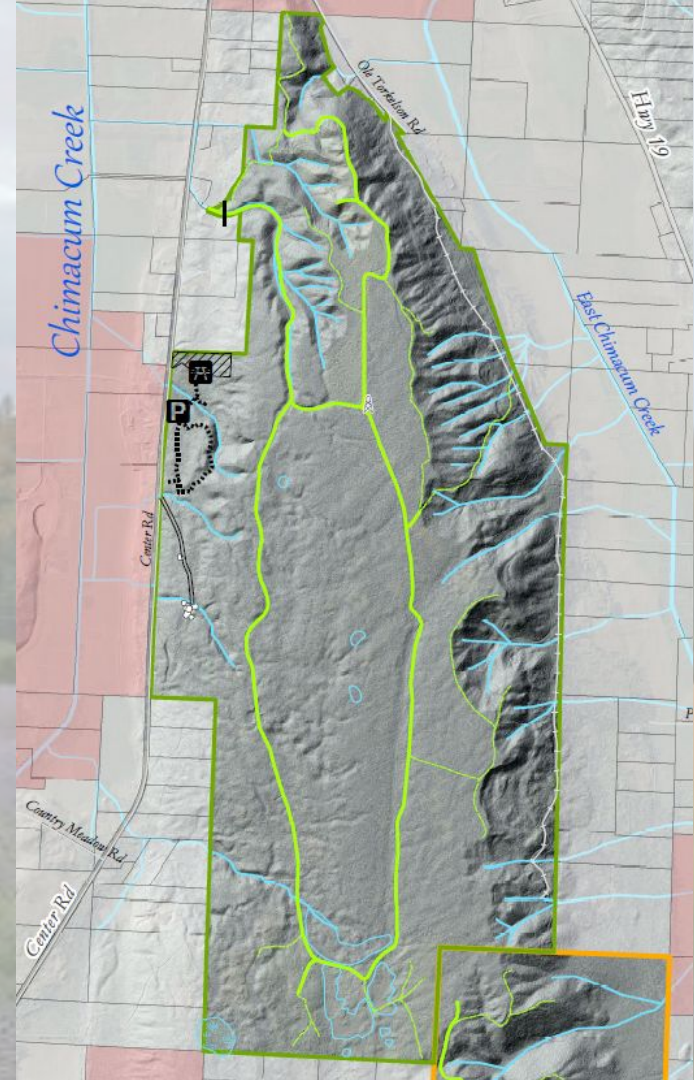
# History of Chimacum Ridge



Ancestral lands of the Chemakum and S'Klallam Tribes

# ABOUT CHIMACUM RIDGE

- 918-acre Landscape feature between Center and Beaver Valleys
- To be managed as a Community Forest for:
  - Economic Benefits
  - Ecological Benefits
  - Social Benefits
- WA DNR, and Private Landowners as Neighbors





# Easement Conditions

- Recreational or educational activities on the Property in accordance with the Stewardship Plan. Recreational uses are limited to non-motorized uses that do not materially adversely impact the **Forestland Conservation Values**
- Activities to monitor, protect, and maintain the Forestland Conservation Values in accordance with the Stewardship Plan
- Planting and operating a commercial nursery or tree farm in support of permitted commercial forestry operations
- Access to the public for hiking, bird-watching and similar terrestrial uses of the Property
- Installation or construction of temporary forestry structures and utilities related to permitted commercial forestry activities
- Installation or construction of storage buildings and the storage of equipment and materials consistent with the **Forestry Values**

## Forestland Conservation Values of the Property

- Commercial timber and non-timber forest resource production; carbon sequestration; climate change resiliency; open-space; wildlife habitat; water quality and retention, and aquifer recharge; educational opportunities; recreational opportunities; and scenic values.
- Desired Future Condition of the Property, a forest ecosystem characterized generally by the following attributes:
  1. A structurally diverse forest stand, with variable species and age classes
  2. Well-distributed large-diameter trees
  3. Well-distributed standing dead trees throughout the Property
  4. Down tree logs and other woody debris well-distributed on the forest floor

# Easement Conditions

- Public parks or recreation centers, parking lots, sports complexes or other uses which could **result in concentrations of more than 50 people at any one time**
- Construction or location of any... structures or facilities intended for human occupancy or recreational use
- Impervious surface limitation of 6% (including gravel roads)
- Construction or location of any schools, hospitals, nursing homes, group homes, day care centers or any sort of retail or industrial structures
- Alteration of surface of land - except associated with permitted uses above
- Activities that cause soil degradation or erosion
- Any alteration of the surface of the Property, any use or activity of the Property that causes, or is likely to cause significant soil degradation or significant erosion or significantly pollute any surface or subsurface waters (Except for activities that are permitted and carried out in compliance with the WA Forest Practices Act)

# Laying the Foundation

- Community planning efforts began in late 2019
- Completed the **Strategic Vision Framework** in late 2020
  - Community Engagement through Project Team and Stakeholder Advisory Group
  - Defined Mission, Vision and Values for the **Chimacum Ridge Community Forest**
- In summer 2021 began an **Access, Recreation, and Education** Planning process with community





# Putting the Community in Community Forest

## Incremental + Iterative Process



Defining a Community Forest  
*piece by piece*



Presenting a “working” version



Community voice feedback early in  
and *throughout* the process.

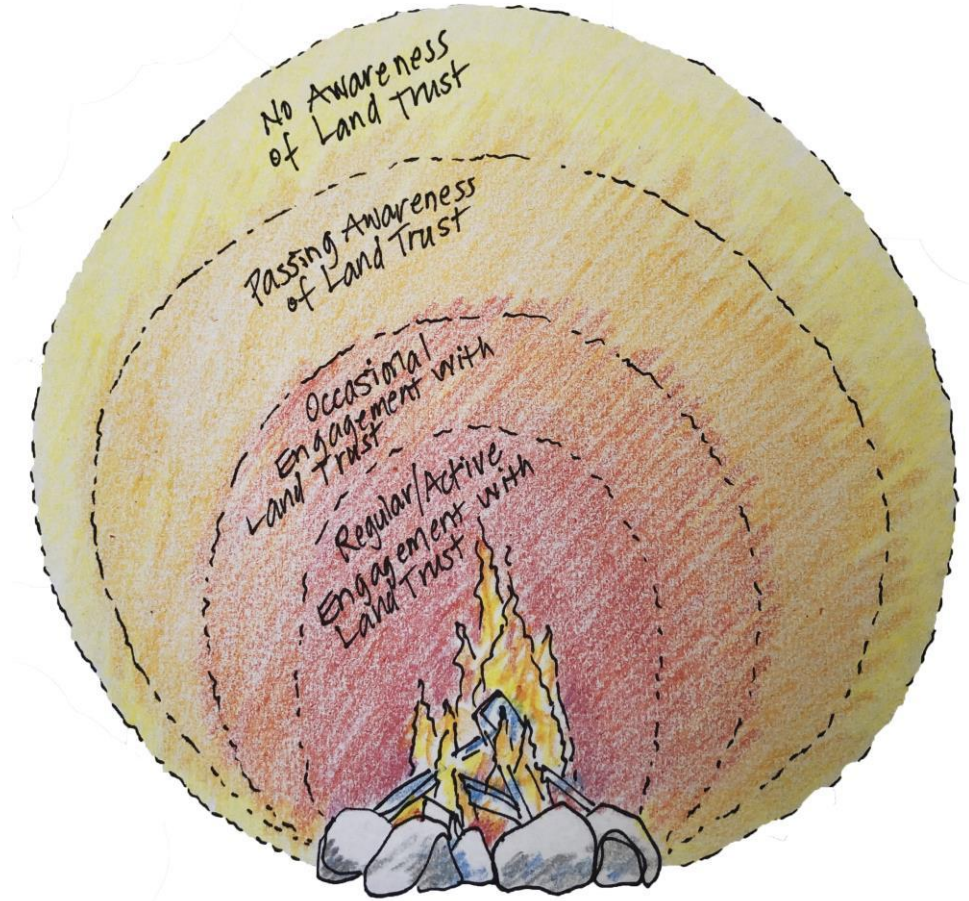


# Community Built

---

## ● Project Team

- Defined Mission, Vision & Values
- Prioritized possible recreation and economic opportunities
- Focused on incorporating the community voice

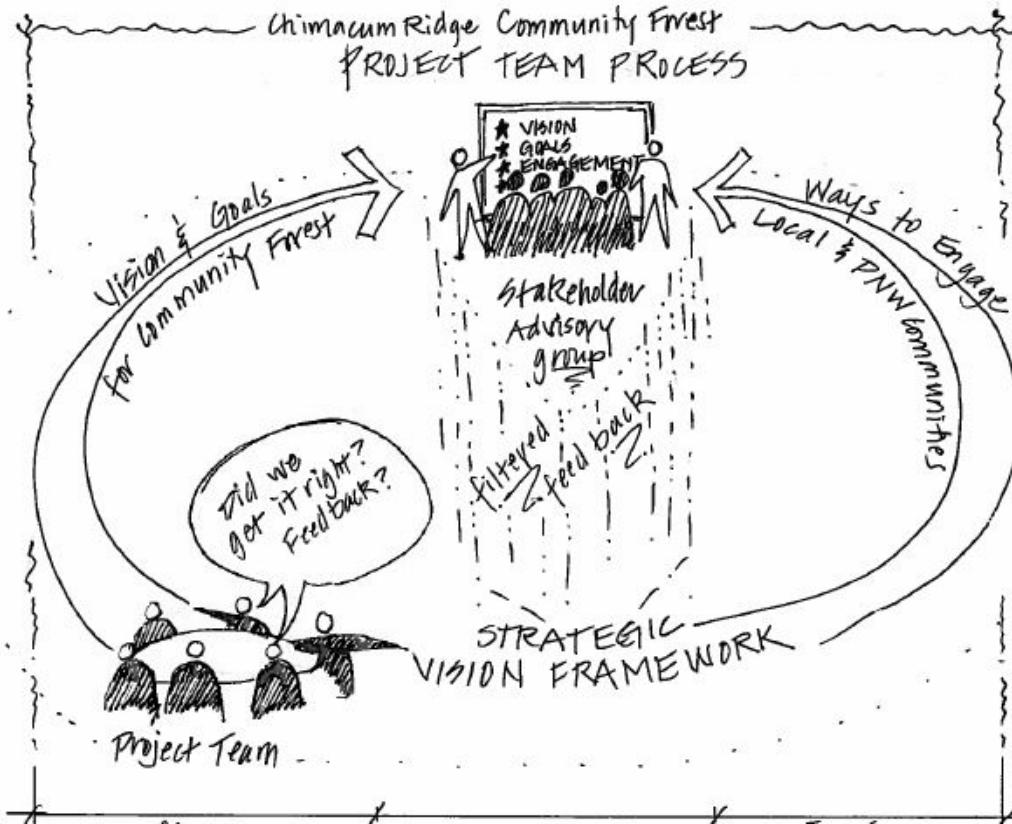


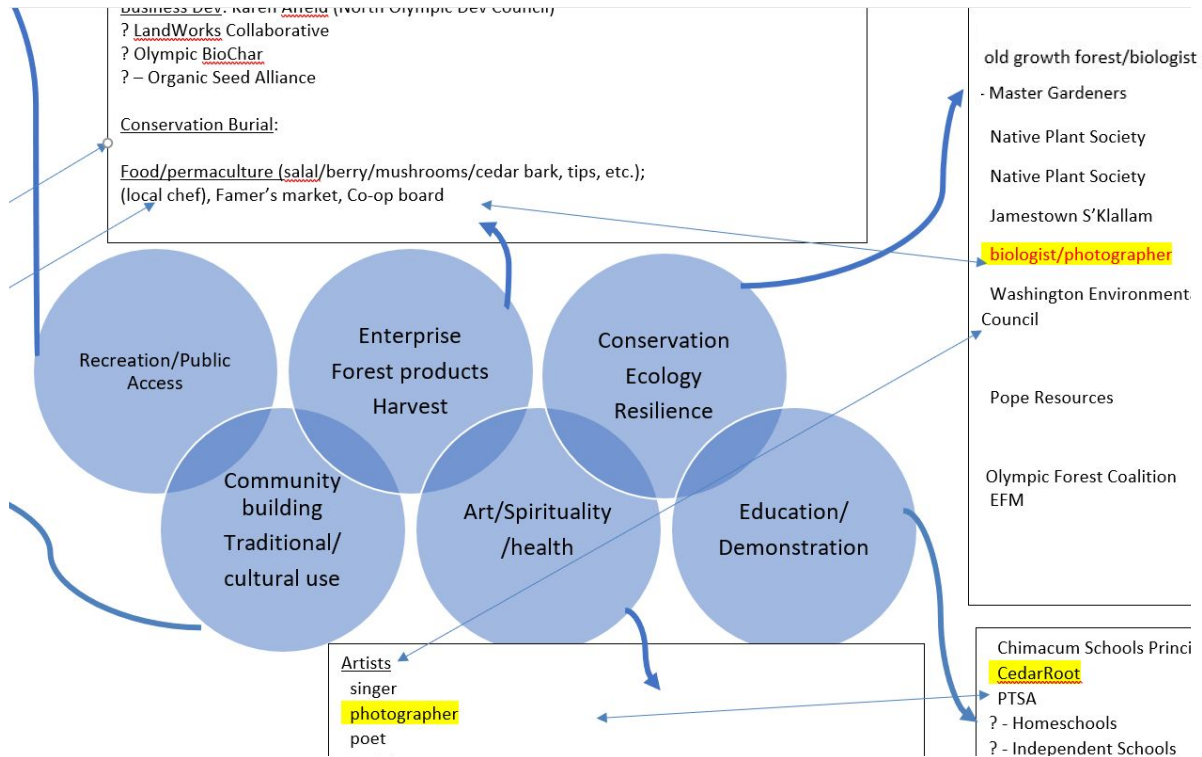


# Community Built

## Stakeholder Advisory Group

- Strategic thinking partners who are representative of the broader community
- Test our assumptions
- Integrate feedback
- Guide outreach and engagement efforts





# The Broader Community







View of Chimacum Ridge from a Beaver Valley farm. Photo by Robert Tognoli.



Chimacum Ridge and Center Valley. Photo by John Guzman



Chimacum Ridge forest. Photo by Coralee Havelberg

# Chimacum Ridge Community Forest

Strategic Vision Framework  
Created September 2020



## Chimacum Ridge Community Forest

Outreach and Engagement Plan  
Created September 2020



Photos clockwise from top: View of the Olympic Mountains from Chimacum Ridge by Kerry Tremain; Spider weaves new web in ferns by Tim Lawson; Ladybug in the sun by Land Trust; Member of the Crescents family of Butterflies by Tim Lawson; and Male and juvenile American Goldfinches by Tim Lawson.



# Laying the Foundation

## Mission Statement

The mission of the Chimacum Ridge Community Forest is to sustain and share the ecological, cultural and economic benefits of this community-driven, working forest for generations to come.

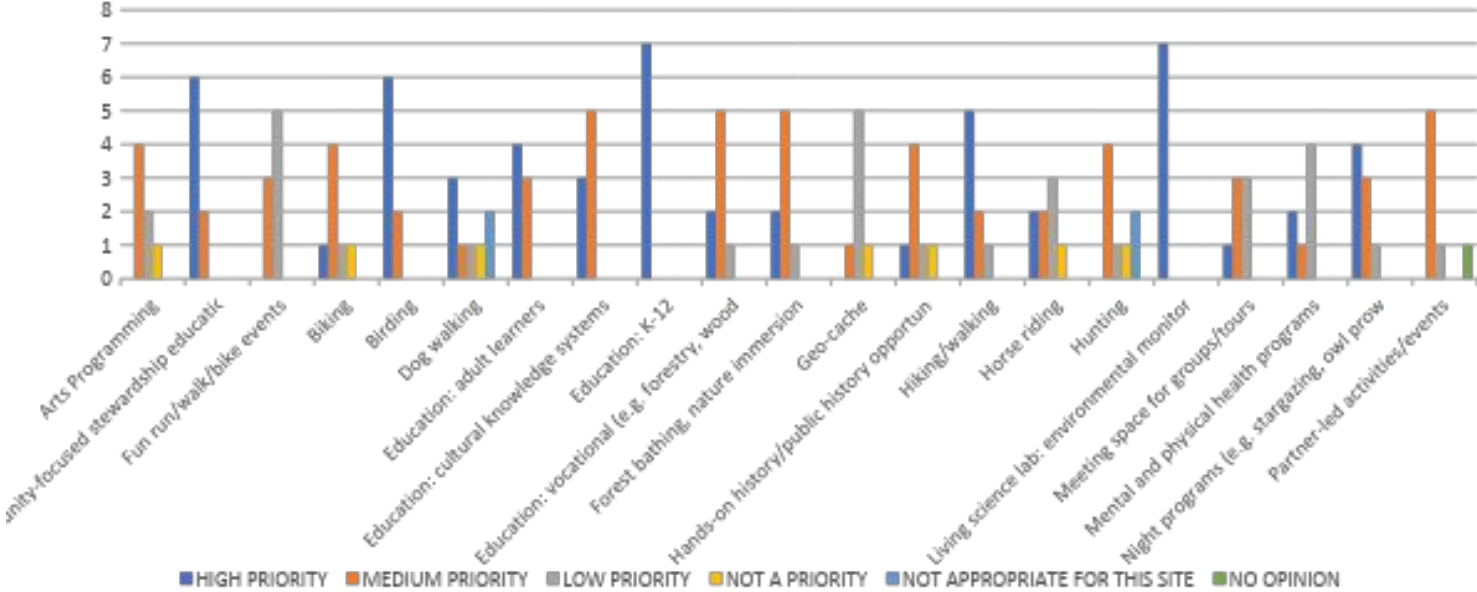
## Vision Statement

Chimacum Ridge Community Forest is a resilient forest for all, connecting communities and modeling regenerative relationships with the land.



# Realizing the Economic, Social, and Ecologic benefits

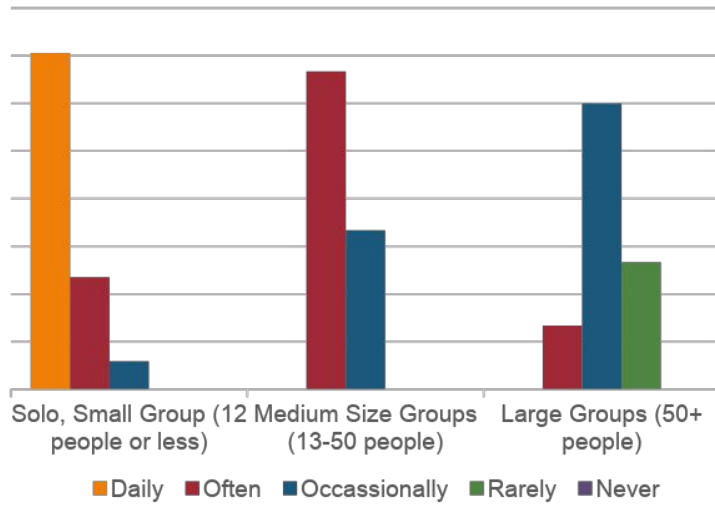
- Public Access, Recreation, and Education



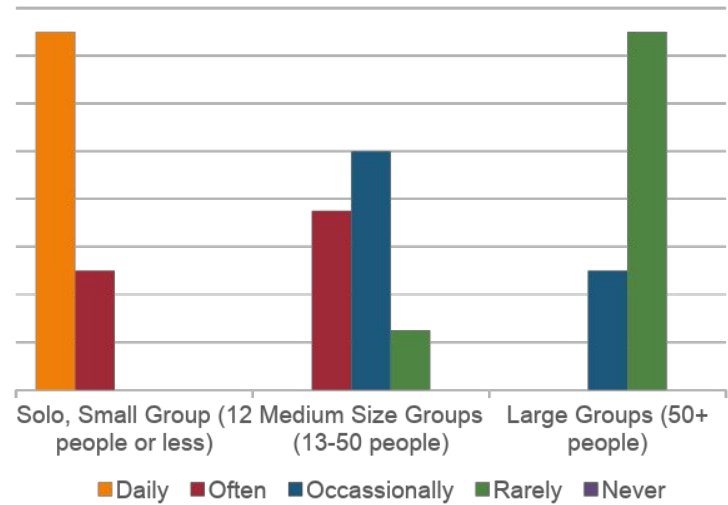


# Q1 From your perspective, the Chimacum Ridge Community Forest should be designed to support:

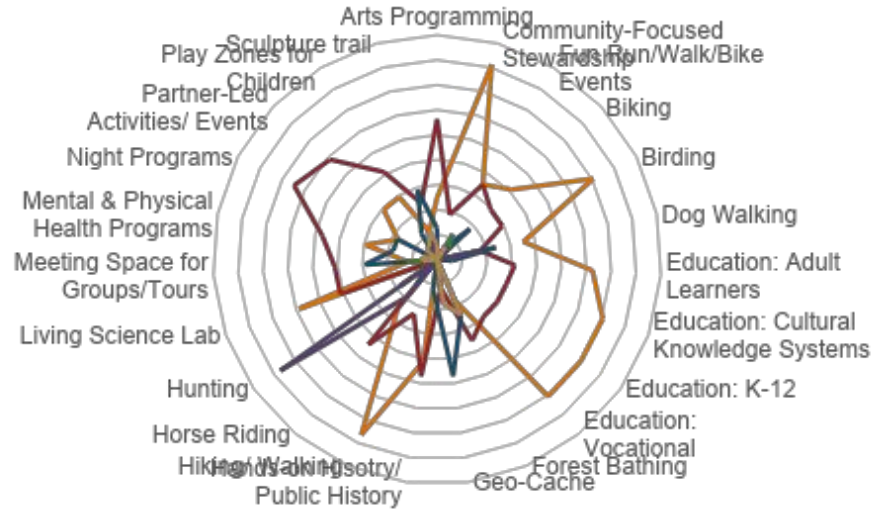
## Stakeholder Advisory Group



## Project Team



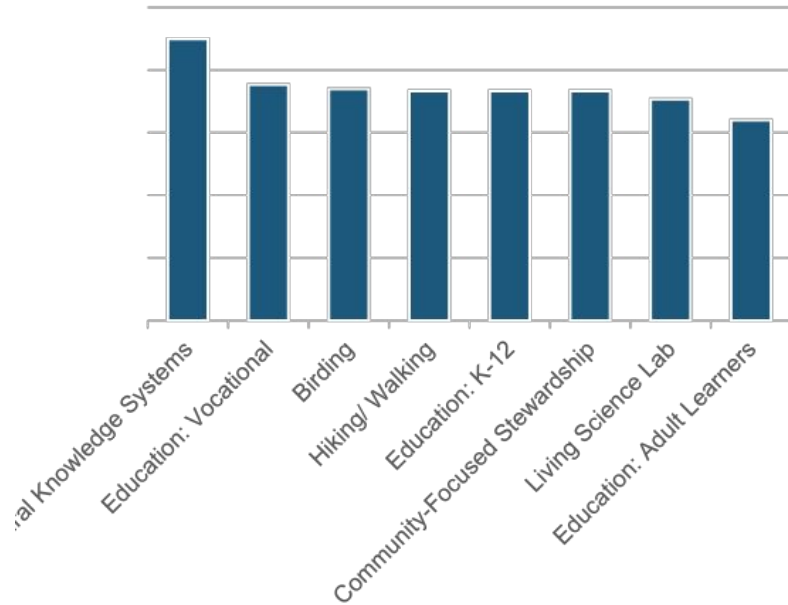
# Q2: Rate the importance of the following educational and recreational activities for the Chimacum Ridge Community Forest



- High Priority
- Medium Priority
- Not Appropriate
- Not a Priority

# Combined Results

## High Priority Educational & Recreation Activities



## Key Findings

- Consistent results at the high and low end of the weighted results, *between both groups and combined rates*
- Education program in all its forms is highly prioritized.



# ACCESS, RECREATION, AND EDUCATION PLANNING: TIMELINE

- **Spring/Summer 2022-** CAT Meetings to develop Goals and Objectives for Access, Recreation, and Education Plan
- **Fall 2022-** Host a full-day Community Workshop with landscape architects
- **Winter 2022-Summer 2023** Draft Access, Recreation, and Education Plan
- **Summer 2023-** CAT Feedback on Draft Plan
- **Fall 2023-** Final Plan Approval



*Photographer: Robert Tognoli, LEO*

# CHIMACUM RIDGE COMMUNITY FOREST

## USER GROUPS

RECREATION  
FOREST ENTERPRISE  
CONSERVATION + RESILIENCE

EDUCATION  
ARTS  
HEALTH + SPIRITUALITY

CULTURAL  
ECONOMICS  
NEIGHBORS

## CATS COMMITTEE

Community Outreach + Engagement

Design Goals  
+ Guidelines

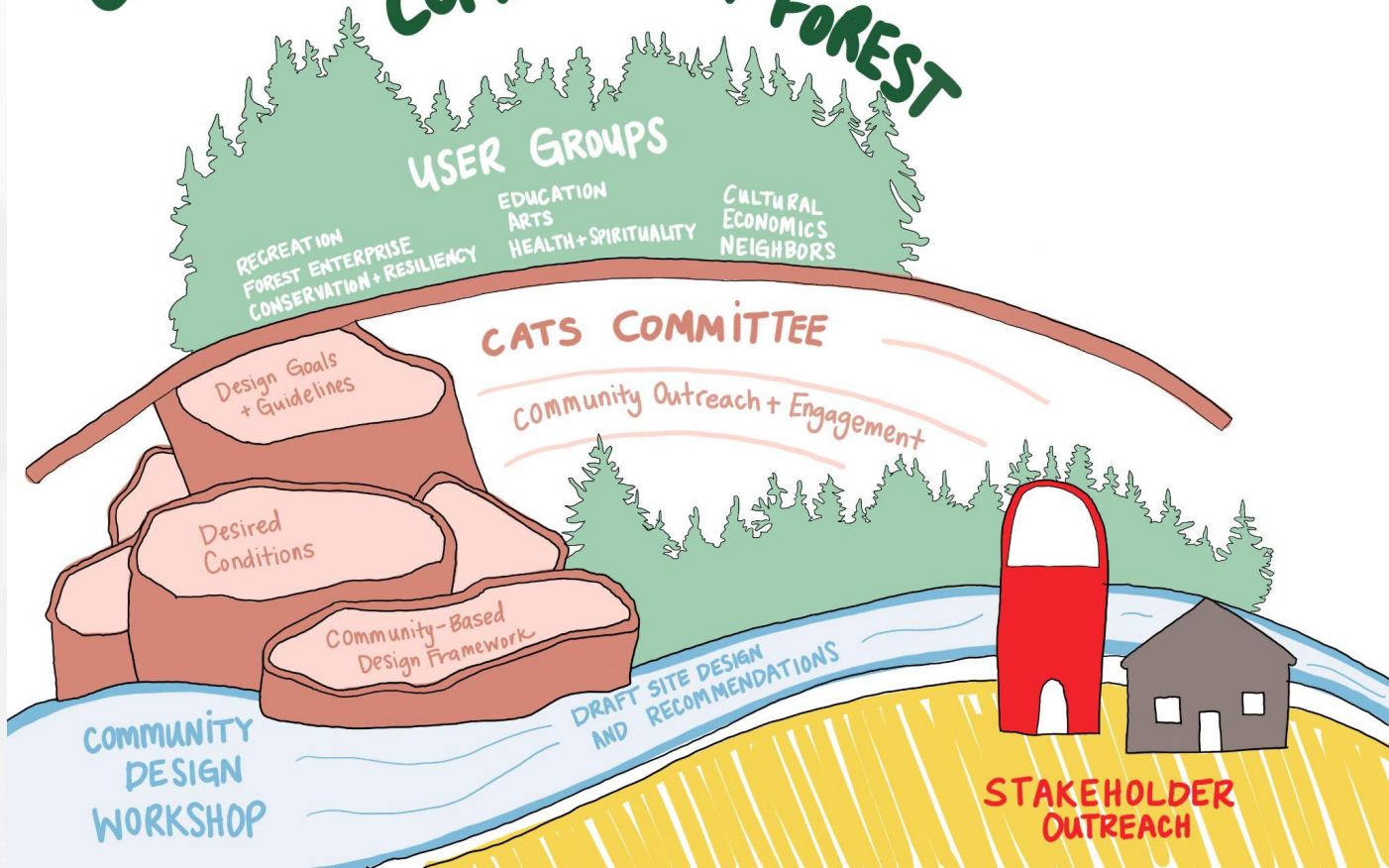
Desired  
Conditions

Community-Based  
Design Framework

COMMUNITY  
DESIGN  
WORKSHOP

DRAFT SITE DESIGN  
AND  
RECOMMENDATIONS

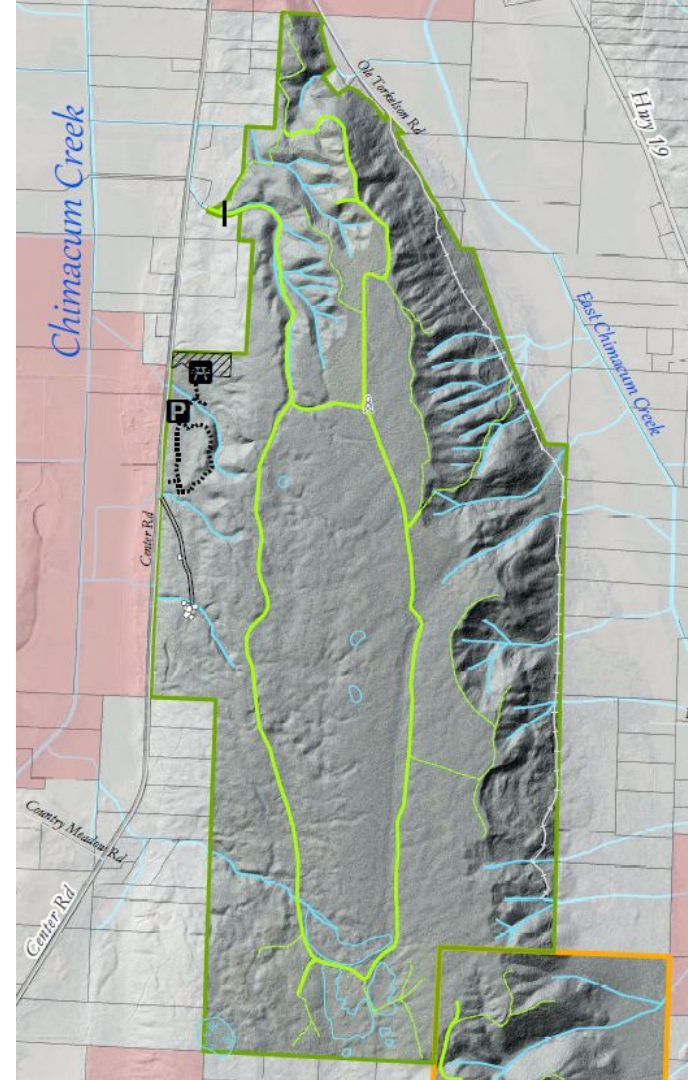
STAKEHOLDER  
OUTREACH





# Community Advisory Team developed Goals and Objectives

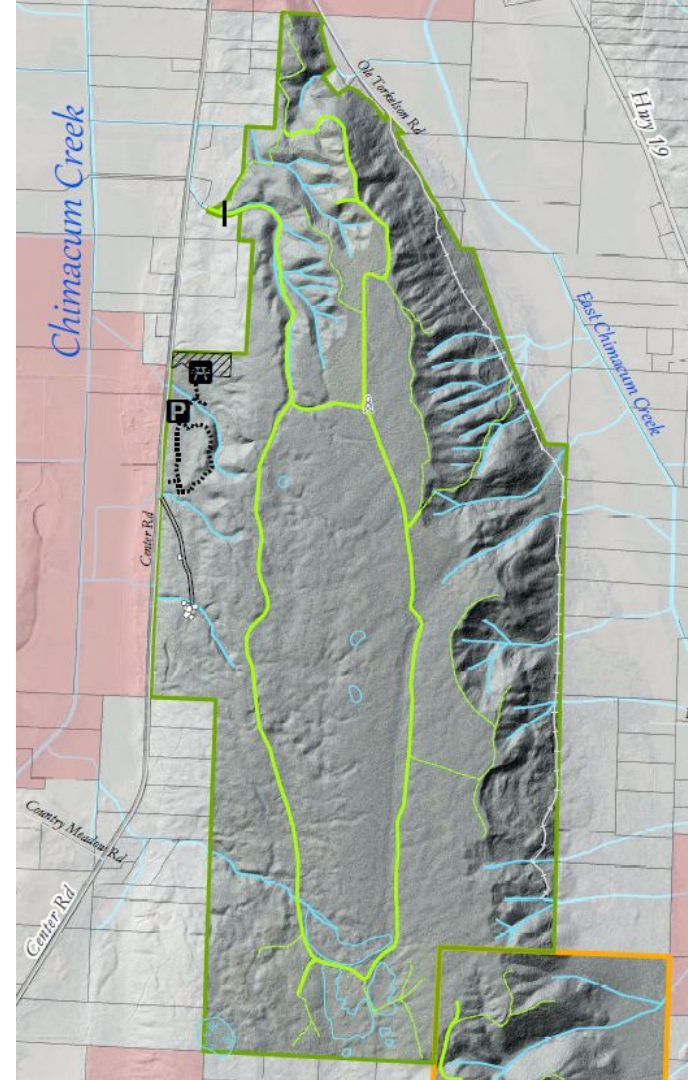
1. Physical access is welcoming and inclusive for all, including BIPOC, LGBTQ+, and visitors who experience disabilities





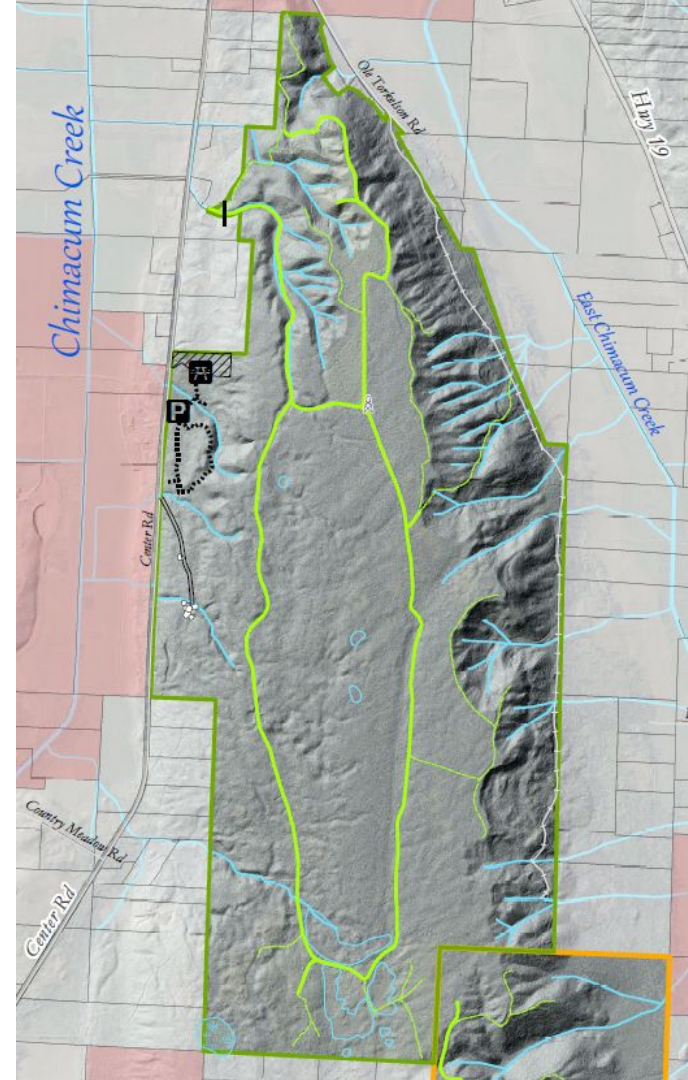
# Community Advisory Team developed Goals and Objectives

2. Parking and infrastructure adequately functions for all appropriate community recreation and education uses.



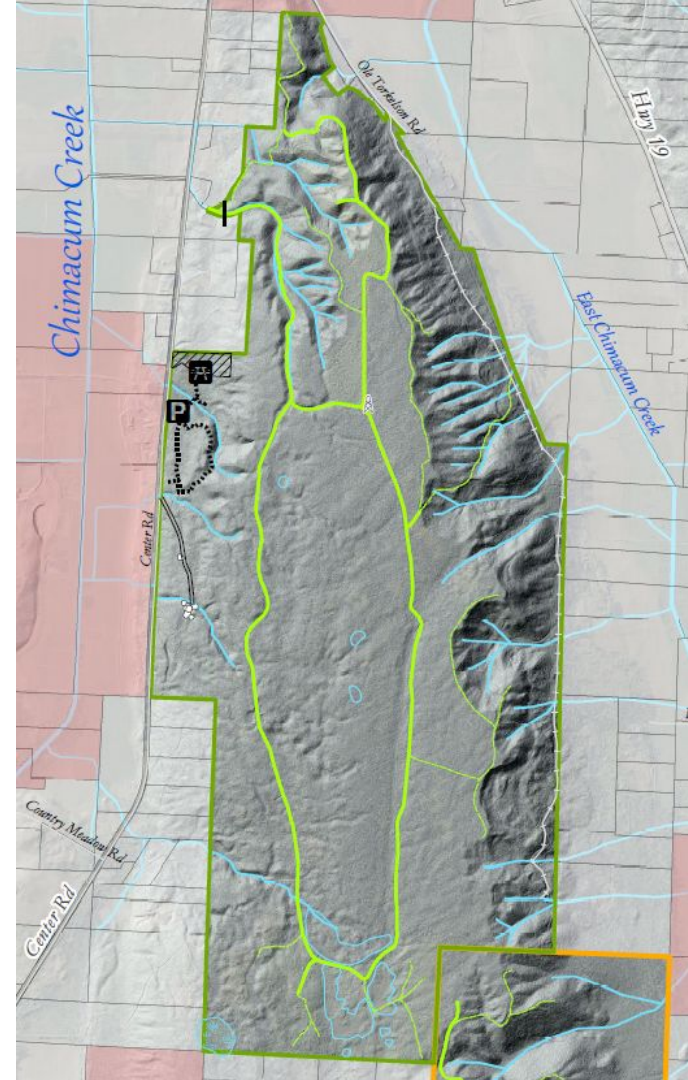
# Community Advisory Team developed Goals and Objectives

3. Access for recreation and education is controlled, and managed consistent with other goals and objectives



# Community Advisory Team developed Goals and Objectives

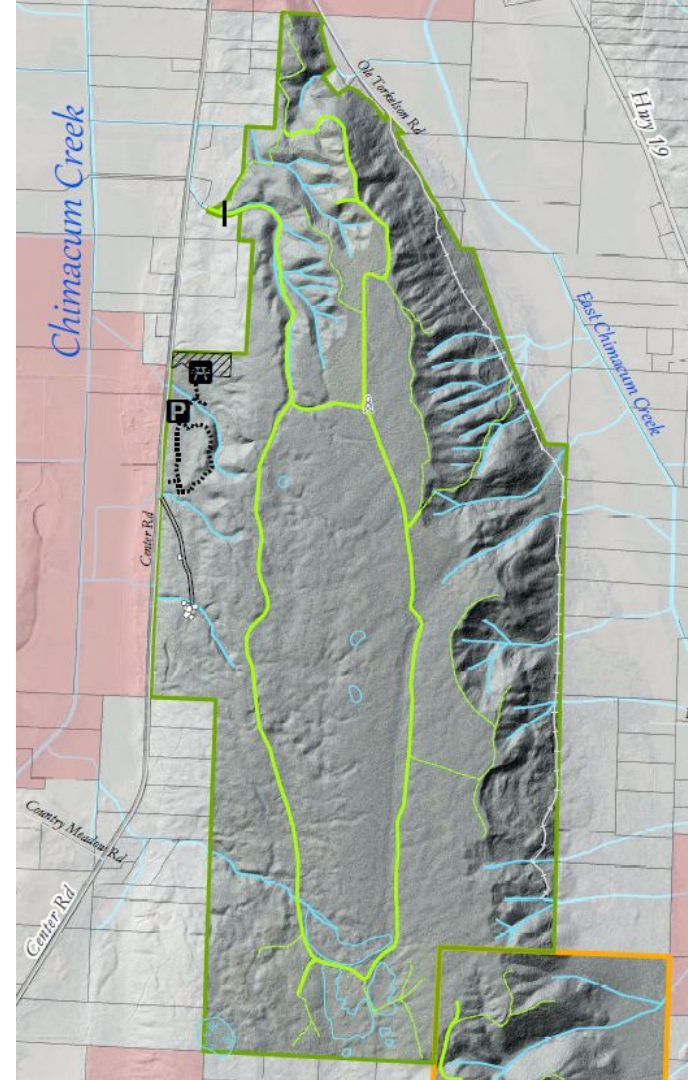
4. Recreation activities are consistent with the perpetual conservation requirements of the site





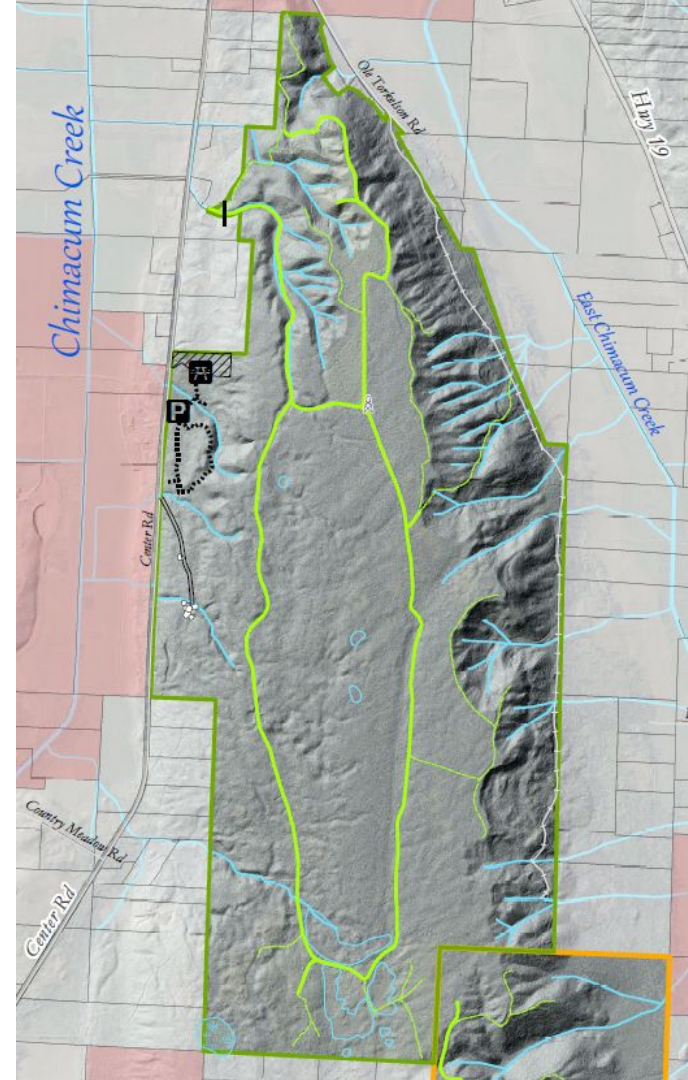
# Community Advisory Team developed Goals and Objectives

5. Different types of recreation activities are made available and are compatibly enjoyed



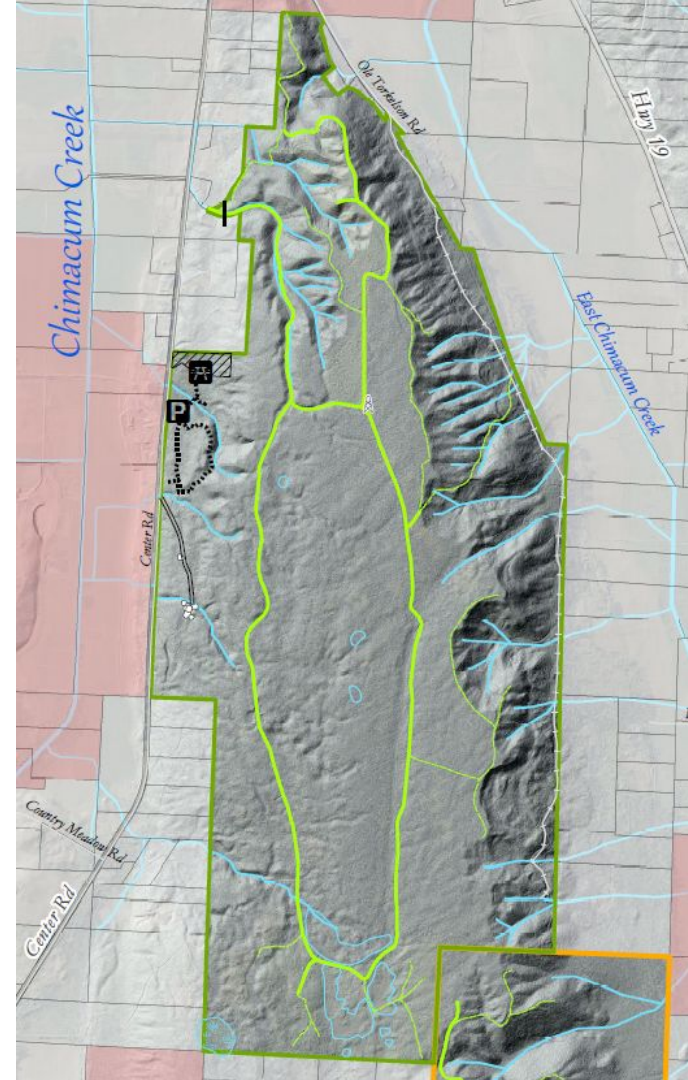
# Community Advisory Team developed Goals and Objectives

6. Self-guided and group-guided education programs that are aligned with the mission, vision, and values of the community forest are regularly available on site



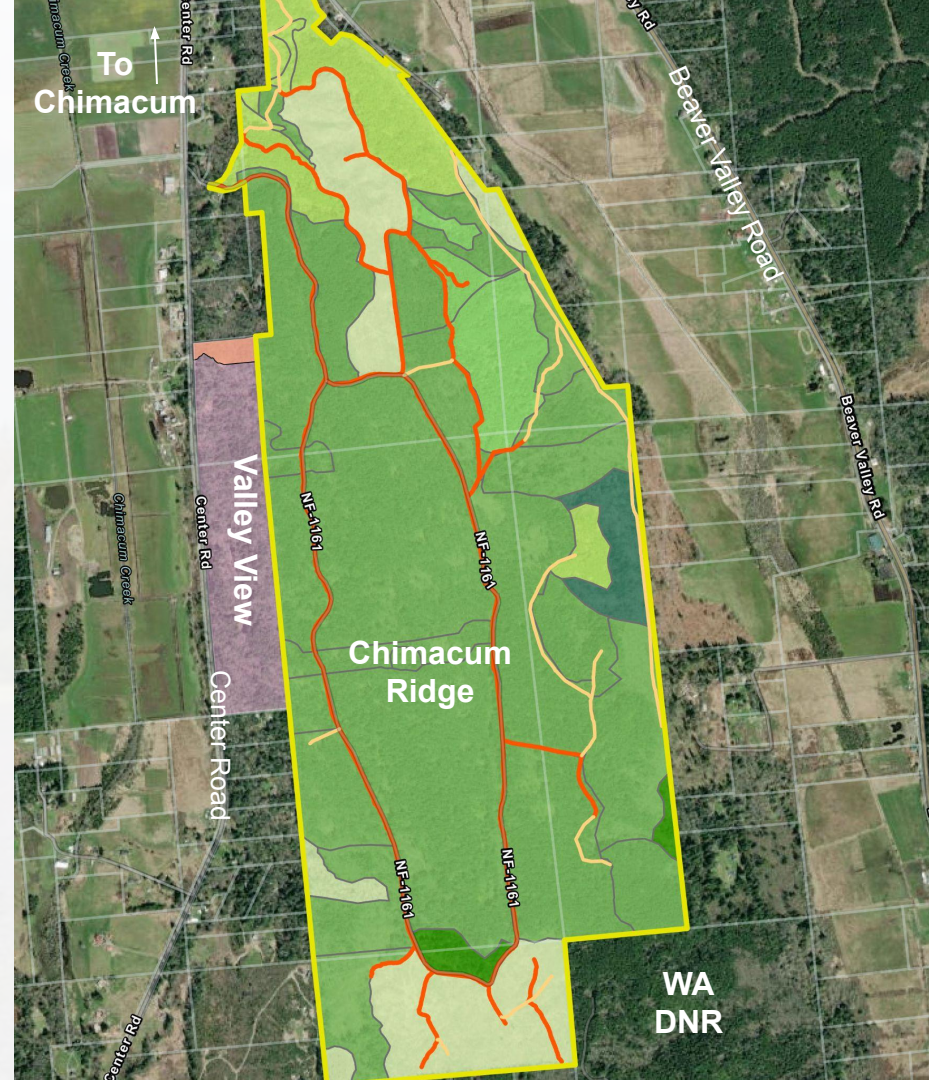
# Community Advisory Team developed Goals and Objectives

7. Education activities and signage accurately represent the history and science of the land, and ensure inclusivity



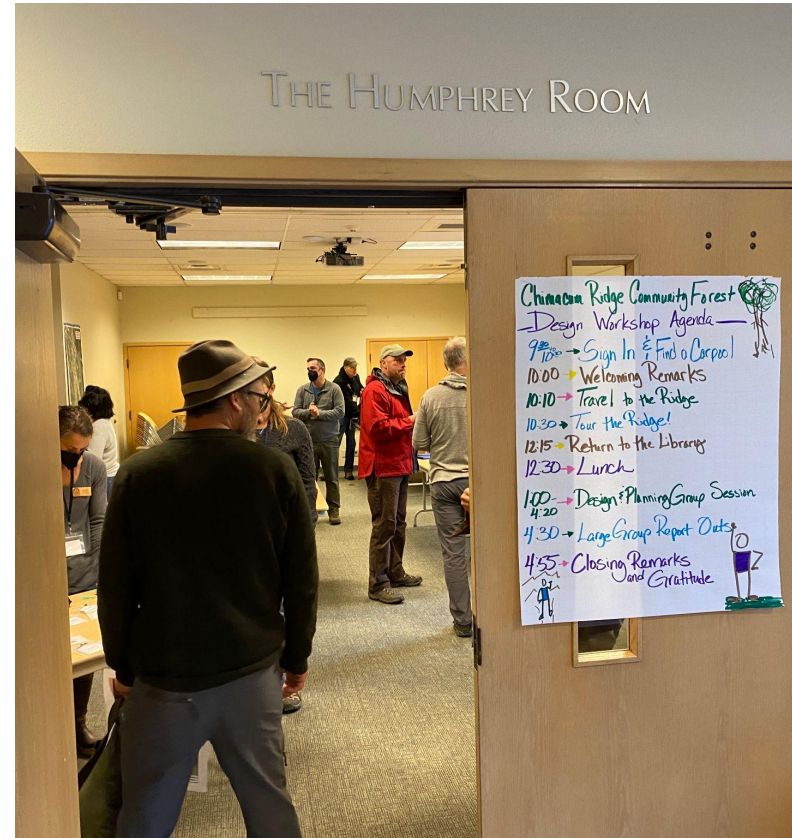


- Improvements for:
  - Hikers and Walkers
  - Low-speed cyclists
  - Equestrians
  - Increased parking with bus turn-around
  - Additional trails suitable for all abilities
  - Nature Studies Area
  
- Identify access, recreation, and education infrastructure for unique features and experiences:
  - Interpretive features
    - Viewpoints
    - Interpretive trails
    - Forest solitude
    - Educational Opportunities
    - Small gathering spaces





# 2022 Community Design Workshop



# Community Design Workshop Groups



## Trails, Recreation and Accessibility Planning

- Trail Placement and Design
- Additional Recreation Recommendations
- Assuring Accessibility for All

## Valley View Site Design and Access Planning

- Trails placement and Design
- Trailhead Access
- Community Connections

## Interpretation and Education Planning

- Identifying Stories and Themes
- Recommending Interpretation Features and Placement
- Education elements for all ages



# 2022 Community Design Workshop





# 2022 Community Design Workshop





# 2022 Community Design Workshop





# 2022 Community Design Workshop

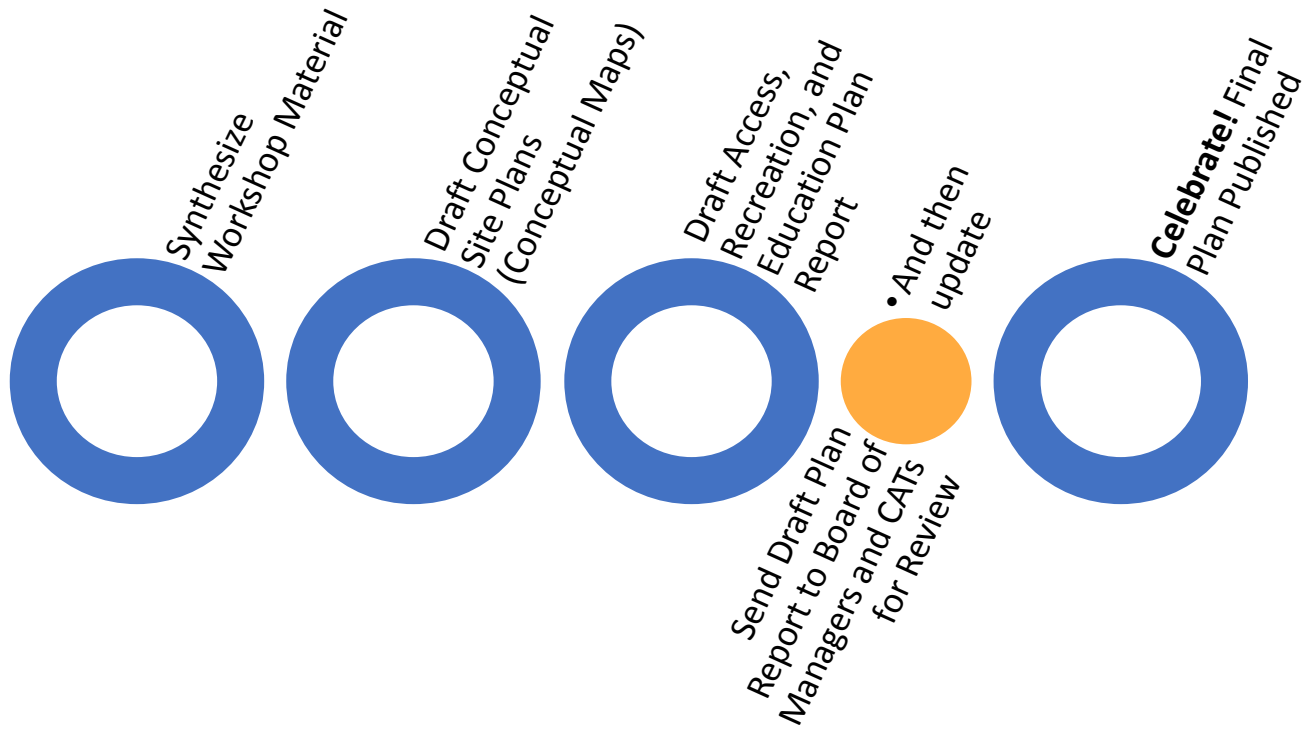




# 2022 Community Design Workshop



# 2022 Community Design Workshop

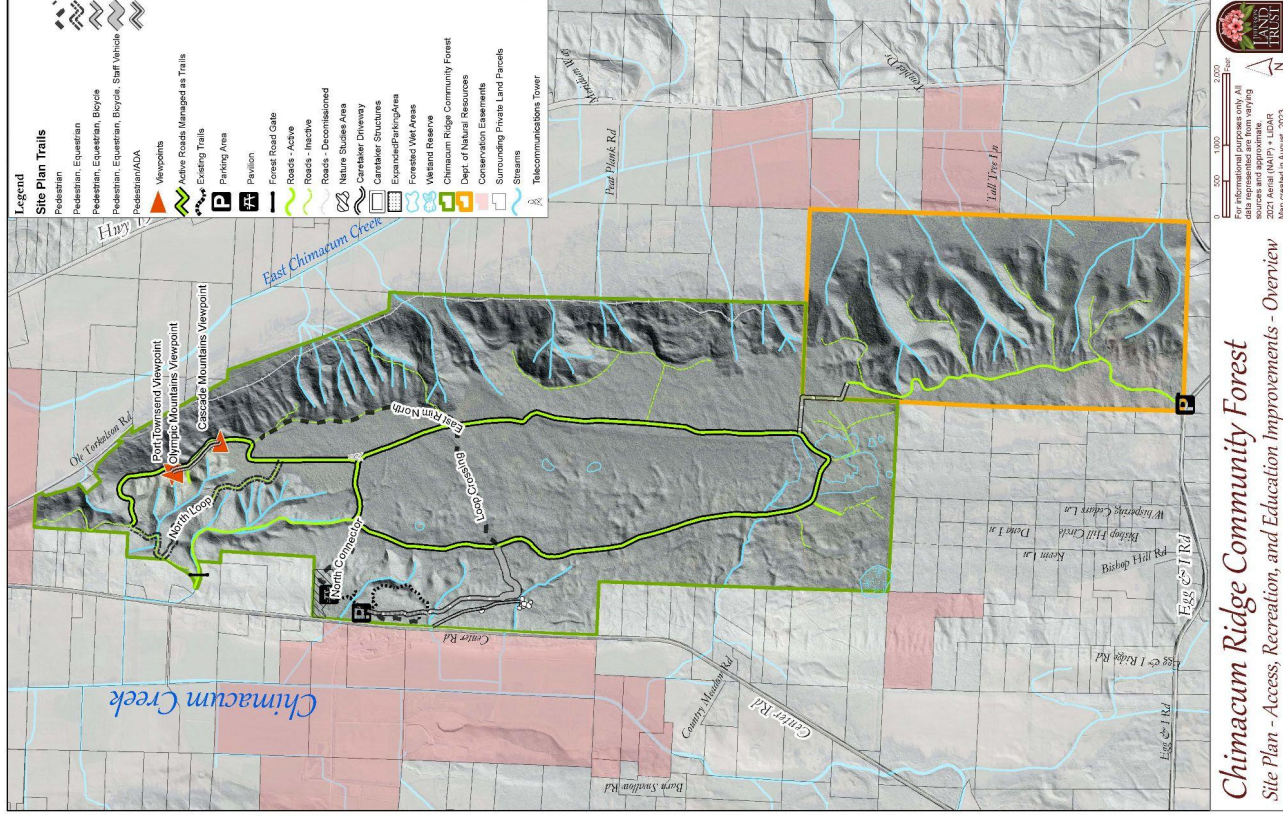




# Access, Recreation, and Education Plan

<b>1. Plan Purpose and Planning Background</b>	<b>4</b>
<b>2. Basis for Planning: Established Foundations</b>	<b>4</b>
Vision, Mission, Values	4
Economic, Ecological, and Social Benefits	6
Management and Governance	9
<b>3. Access, Recreation, and Education Goals and Objectives</b>	<b>10</b>
Access	10
Recreation	12
Education	13
<b>4. Strategies, Actions, and Guidelines for Implementation</b>	<b>14</b>
ACCESS	14
RECREATION	17
EDUCATION	19
<b>7. Next Steps</b>	<b>22</b>
Phased Approach	23
Monitoring	25
<b>APPENDIX 1 - SITE PLAN</b>	<b>26</b>
Site Plan - Improvements	26
Site Plan - Maps	32
<b>APPENDIX 2 - Support</b>	<b>33</b>

# Access, Recreation, and Education Plan







# Questions and Answers

